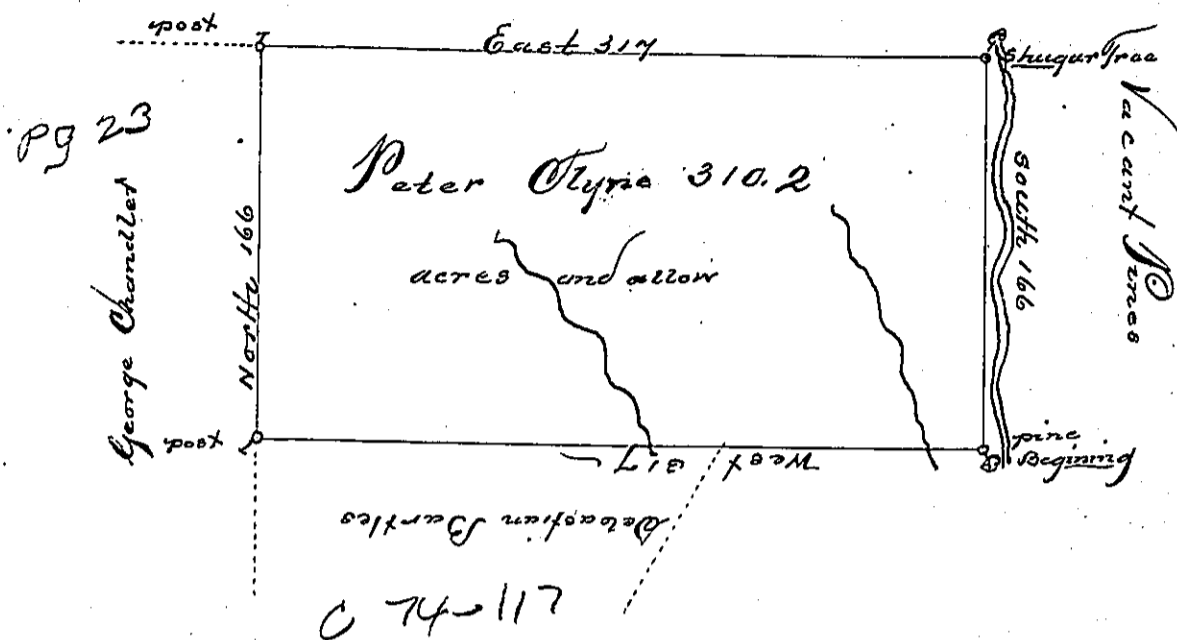


By Mountain



The Draught of a Tract of Land called *Clyne* situate on a Branch of *Pine Creek* in the County of *Chamberland* containing *Three Hundred Ten Acres forty six perches* with the usual ^{allowance} of six acres $\frac{1}{2}$ Cent for Roads Survey'd the 10th Day of *October* Anno Domini 1766. In pursuance of an Order No 298. to *Peter Clyne* Bearing Date at *Philadelphia* the 16th day of *August* Anno Domini 1766

Wm MacLay Deput. Surveyor

To *John Lukens Esq. Secy. Genl.* of the Province of *Pennsylvania*

IN TESTIMONY that the above is a copy of the original remaining on file in the Department of Internal Affairs of Pennsylvania, made conformably to an Act of Assembly approved the 16th day of February, 1833, I have hereunto set my Hand and caused the Seal of said Department to be affixed at Harrisburg, this

third day of August 1897.

James W. Fatta
Secretary of Internal Affairs.